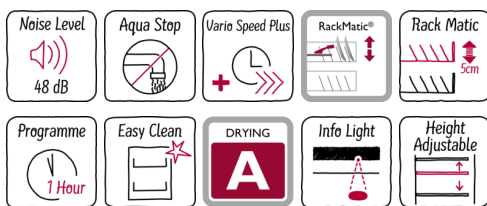


N 50, Fully-integrated dishwasher, 60 cm
S513G60X0G



A++



The dishwasher that's flexible to load and indicates when it's running.

- ✓ InfoLight – a light projected onto the floor shows you that the dishwasher is in operation
- ✓ Chef 70° – the pro programme for getting stubborn dirt off pots and casserole dishes
- ✓ Optional VarioSpeed Plus – clean and dry dishes up to three times faster
- ✓ Energy efficiency class A++ for very low consumption
- ✓ AquaStop for a lifetime guarantee against water damage
- ✓ Height Adjustable Top Basket: Three different height levels make loading easy and convenient
- ✓ Extra Dry: for difficult-to-dry loads select the extra drying option

Features

Technical Data

Water consumption (l) : 10.0
 Construction type : Built-in
 Height of removable worktop (mm) : 0
 Required niche size for installation (HxWxD) : 815-875 x 600 x 550
 Depth with open door 90 degree (mm) : 1150
 Adjustable feet : Yes - front only
 Maximum adjustability feet (mm) : 60
 Adjustable plinth : both horizontal and vertical
 Net weight (kg) : 43.022
 Gross weight (kg) : 45.1
 Connection rating (W) : 2400
 Current (A) : 10
 Voltage (V) : 220-240
 Frequency (Hz) : 50; 60
 Length of electrical supply cord (cm) : 175
 Plug type : GB plug
 Length inlet hose (cm) : 165
 Length outlet hose (cm) : 190
 EAN code : 4242004222156
 Number of place settings : 12
 Energy efficiency class (2010/30/EC) : A++
 Energy consumption annual (kWh/annum) - NEW (2010/30/EC) : 258.00
 Energy consumption (kWh) : 0.90
 Power consumption in left-on mode (W) - NEW (2010/30/EC) : 0.10
 Power consumption in off-mode (W) - NEW (2010/30/EC) : 0.10
 Water consumption annual (l/annum) - NEW (2010/30/EC) : 2800
 Drying performance : A
 Reference programme : Eco
 Total cycle time of reference programme (min) : 210
 Noise level (dB(A) re 1 pW) : 48
 Installation type : Full-integrated

Optional accessories

Z7710X0	inlet and outlet hose extension
Z7861X1	decorative strips 81 cm st. steel
Z7863X1	Rack insert for stemware dishwasher
Z7870X0	Accessories dishwasher
Z7871X0	Silver polishing cassette
Z7880X0	Accessories dishwashers



N 50, Fully-integrated dishwasher, 60 cm

S513G60X0G

Features

Performance

- Energy Efficiency Class: A++ (on an Energy Efficiency Class scale from A+++ to D)
- Capacity: 12 place settings
- Energy consumption in programme Eco 50 °C: 258 kWhper year, based on 280 standard cleaning cycles using cold water fill and the consumption of the low power modes. Actual energy consumption will depend on how the appliance is used.
- Water consumption in Eco 50 programme: 10 litres
- Water consumption in Eco 50 programme: 2800 litres per year, based on 280 standard cleaning cycles
- Programme time in Eco 50 programme: 210 minutes
- Noise level dB (A) re 1pW: 48 dB

Programmes/functions

- 6 programmes: Chef 70 °C, Auto 45-65 °C , Eco 50 °C, Glass, 1 hour 65 °C, Pre rinse
- 5 cleaning temperatures
- 2 special options: VarioSpeedPlus, Extra Dry
- Machine Care

Flexible design elements

- Flex 2 basket with TouchPoints
- 3 stage Rackmatic height-adjustable top basket
- 2 foldable plate racks in top basket
- 4 foldable plate racks in bottom basket
- Knife rack in top basket
- Moveable cutlery basket in lower rack

Innovations and technology

- Neff EfficientSilentDrive
- NeffSparkle - glass care system
- Heat exchanger - Hygienic and efficient drying
- Efficient SilentDrive BLDC motor
- Curved spray arms
- DosageAssist detergent dispenser
- DetergentAware
- AquaSensor®, Load sensor
- Neff AquaStop® with guarantee

Design features

- Red InfoLight®
- Display colour: Red LED indicators
- Large item spray head, including Steam protection plate
- Stainless steel/Polinox interior
- Push button top controls
- LED salt refill indicator, LED rinse-aid refill indicator
- Alternating spray arms
- Regenerative electronics
- Self-cleaning filter system with 3 piece corrugated filter
- Childproof Door lock
- Time delay (1-24 hours)
- Acoustic end of cycle indicator
- Dimensions (HxWxD): 81.5 x 59.8 x 55cm
- Efficiency information relates to the Eco 50 programme. This programme is suitable for cleaning normally soiled tableware and is the most efficient programme in terms of combined energy and water consumption.